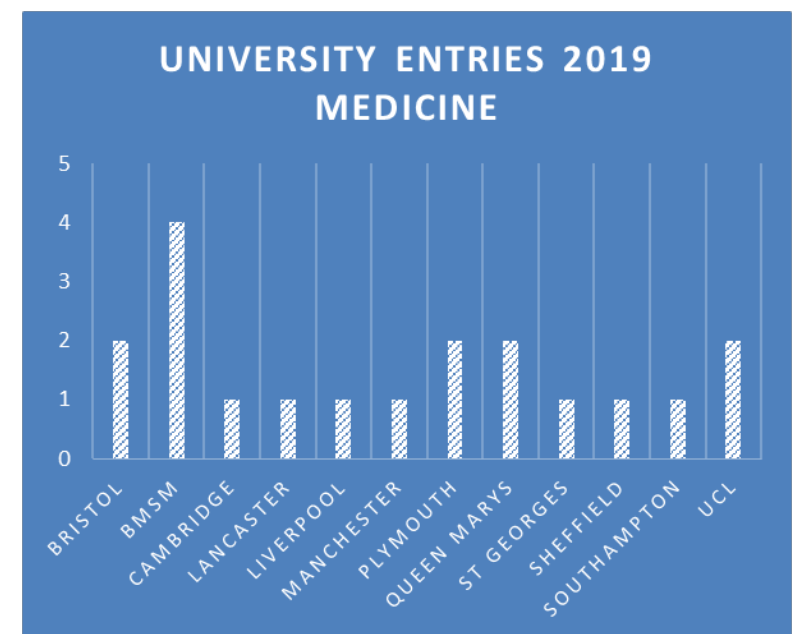
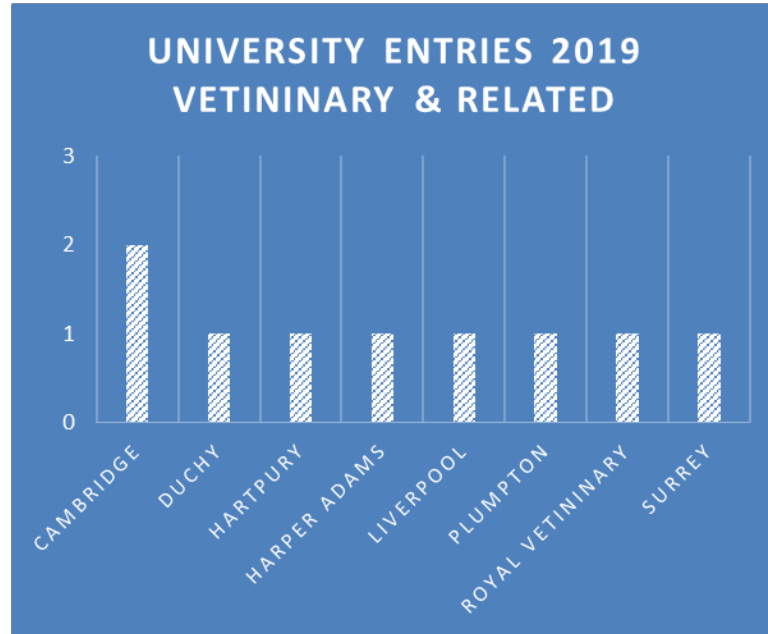
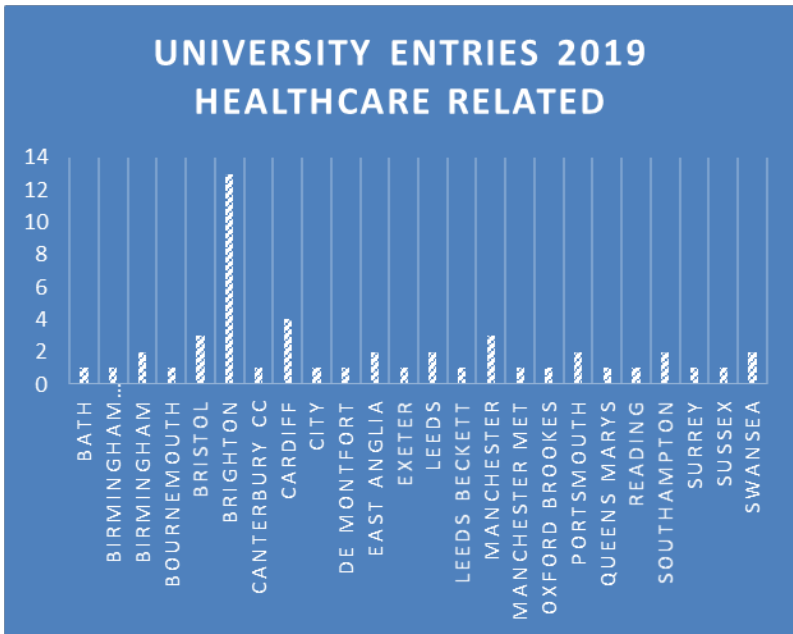


# Medical Careers

## Higher Education at BHASVIC

**In Sept 2019, 49 BHASVIC students began Medical-related degrees at 24 different universities**

**In addition, 9 students went onto study veterinary science & related degrees, and 19 students went onto study medicine.**



## Should I study Medicine / Veterinary / Healthcare at degree level?

**Medicine, Veterinary Science and Dentistry are highly competitive but there are a huge range of related degrees that are healthcare related.**



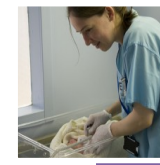
### Types of degree

- There is a huge range of healthcare degrees
- Nursing and specialism eg Adult
- Midwifery
- Podiatry
- Pharmacy
- Physiotherapy
- And many more



### Entry Requirements

- Medicine is highly competitive – 3 A grades at A level but there may be other pathways
- Other healthcare degrees ask for a range of A levels and grades and there may well be opportunities for foundation years to build up scientific skills

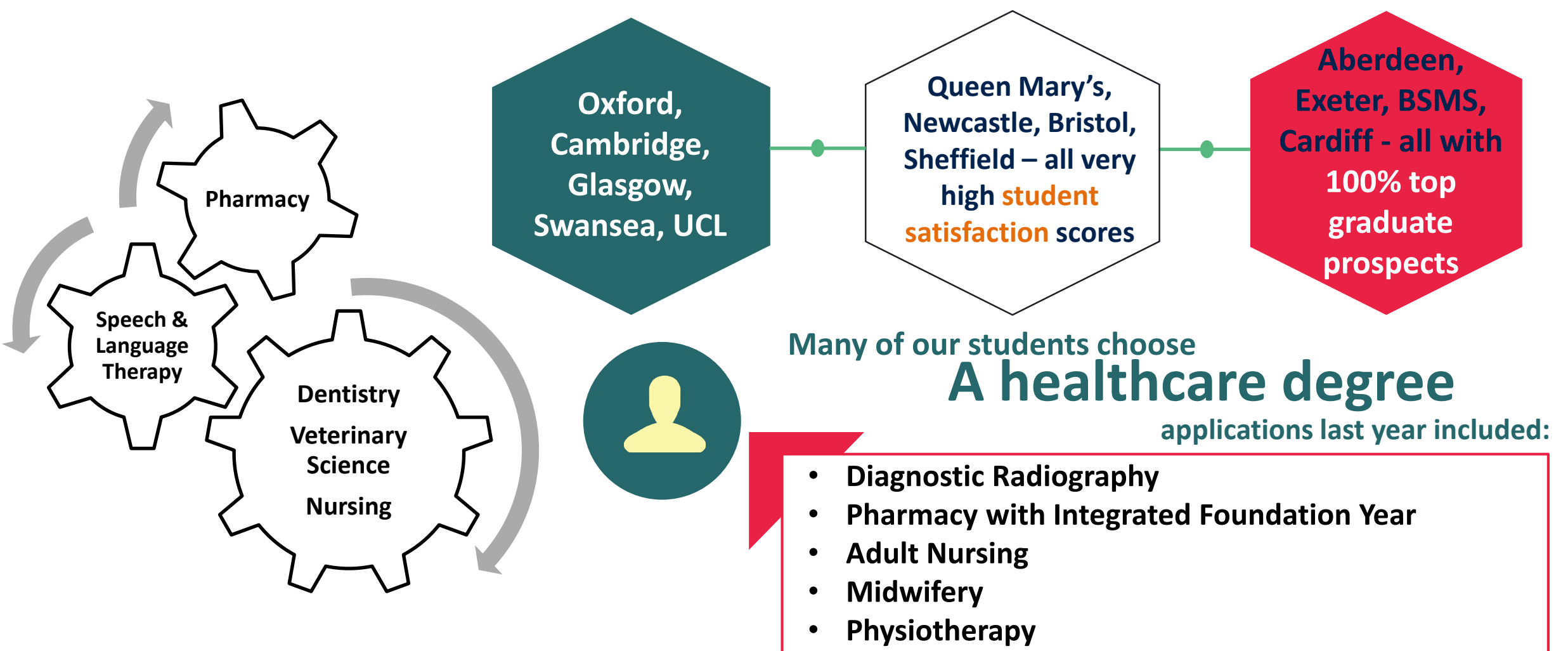


### Example modules

- Nursing degrees include
- Health issues and ethics
- Work-based learning
- Personal development
- Developing skills for practice
- Managing complexities in care delivery
- Introduction to epidemiology
- Global health and sustainability
- Developing therapeutic approaches and practice

## Top 10 Universities for Medicine

Complete University Guide 2020



Why not try a foundation degree..

Aberdeen (Medicine) A\*AA

A level grades or BTEC equivalents

Liverpool (Nursing) BBB

Bath (Pharmacy) BBC

Middlesex (Veterinary Nursing with Foundation Year) DD

.....or higher/degree apprenticeship

A variety of Healthcare related opportunities NHS Careers