

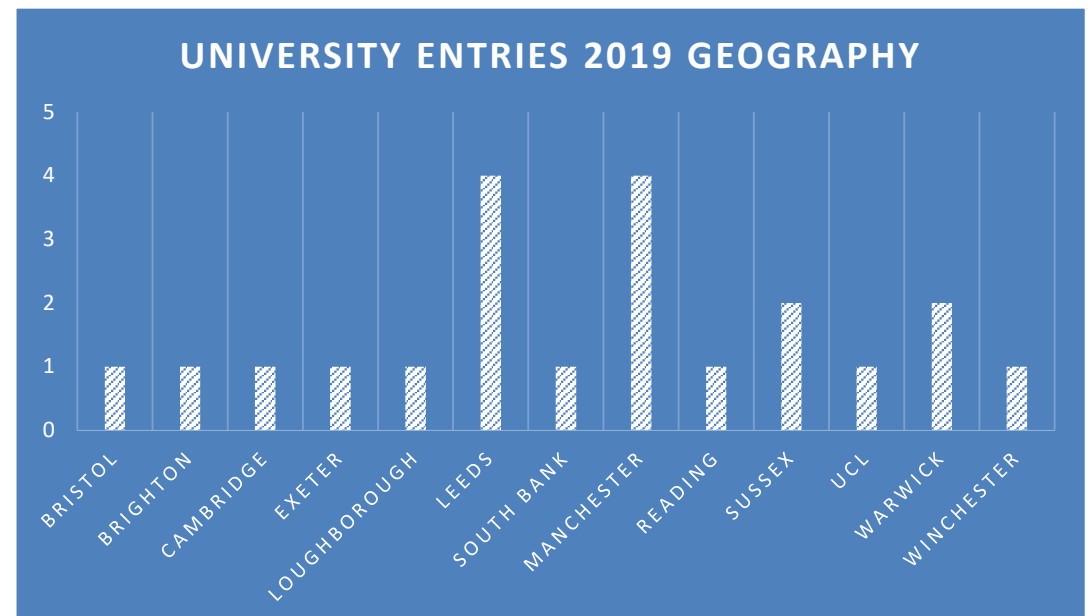
Geography

Higher Education at BHASVIC 2019

In Sept 2019, 21 BHASVIC students went onto study Geography degrees at 13 different universities

In addition, students have increasingly supplemented their Geography studies by choosing Global Issues as a focus for higher level study including International Development.

Students can choose International Development or Current Affairs as a portfolio choice in A2 to support their applications.



Should I study Geography at degree level?

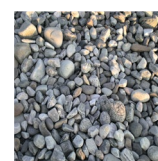
Geography covers the physical and manmade world around us. Courses can include a mix of human, physical and environmental geography or you can specialise in one of these areas.

The work / assessment style varies, from online tests, exams, coursework & primary research (interviews/land-use surveys, scientific practicals) to essential statistical software.



Geography degrees

- You can choose to study straight Geography or a closely related subject, for example
- geophysics
- environmental geoscience
- Geology
- There is also a strong crossover with Environmental Science



Entry Requirements

- A-levels (or equivalent) usually required
- Geography for most courses
- Useful to have
- Chemistry
- Biology
- Physics
- Mathematics

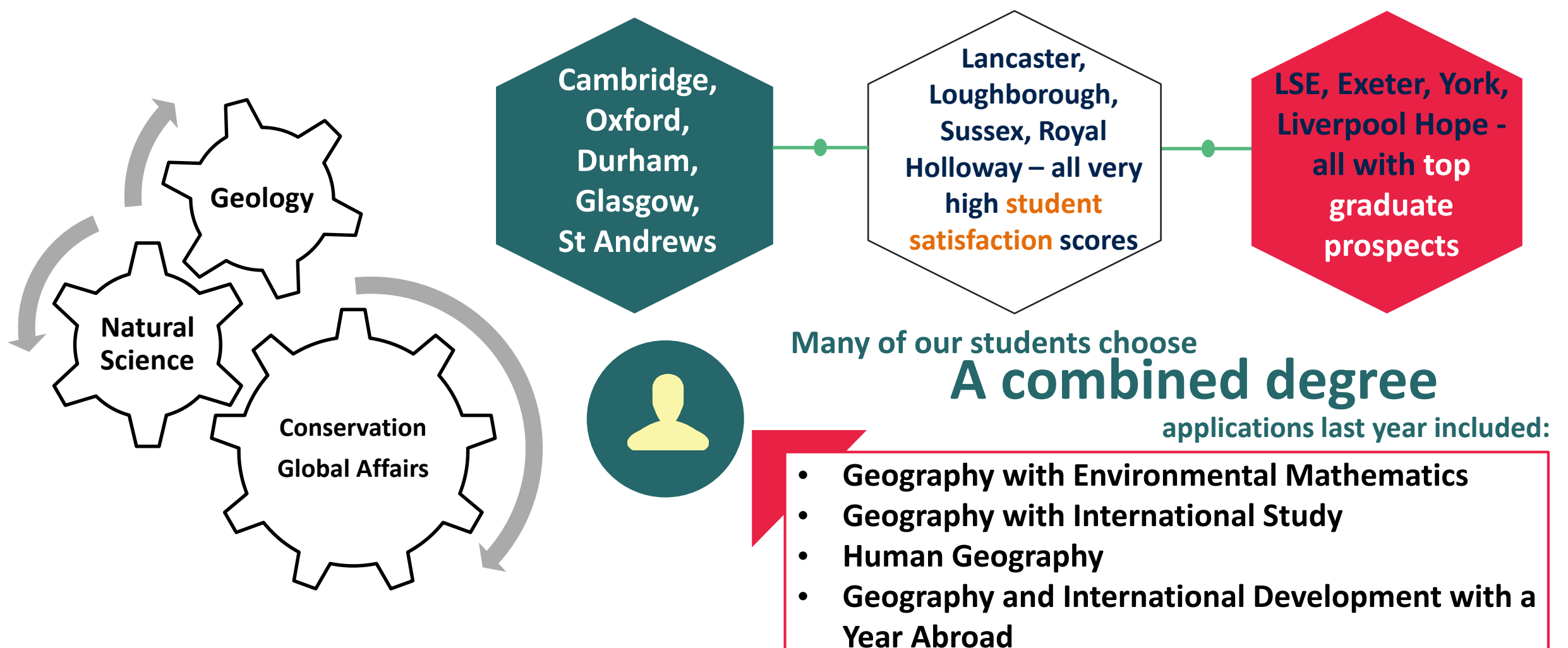


Example degree modules

- Global worlds, global challenges
- Skills and techniques in geosciences
- Physical environments
- Environment & society
- Analysing geographical and environmental data
- Earth systems
- Global climate systems
- Historical cultural geographies
- Theory, space and society
- Urbanism, culture and modernity

Top 10 Universities for Geography

Complete University Guide 2020



Why not try a foundation degree..

Queen Mary
ABB

A level grades
or BTEC
equivalents

Brighton
BBC

Aberdeen
BBB

Sussex
(with foundation
year)
CCC

.....or degree /
higher
apprenticeship

Construction,
planning & built
environment, e.g.
surveying technician
Apprenticeships
UCAS.com