

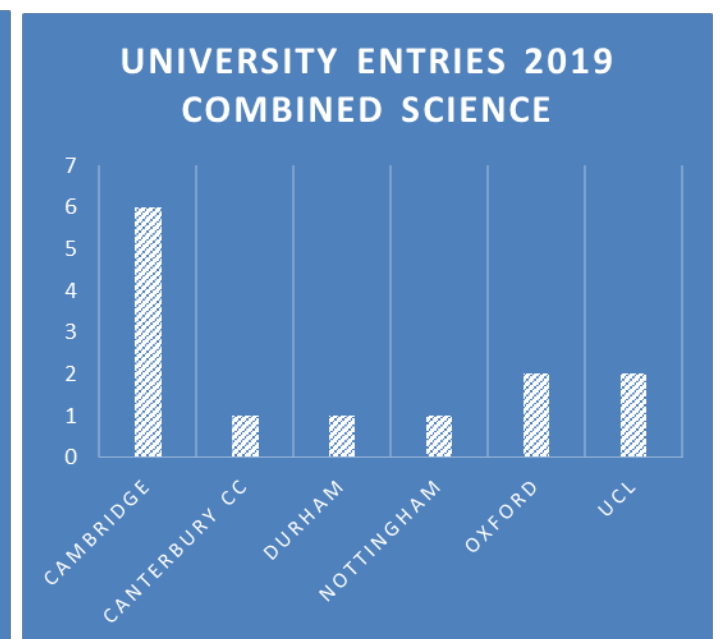
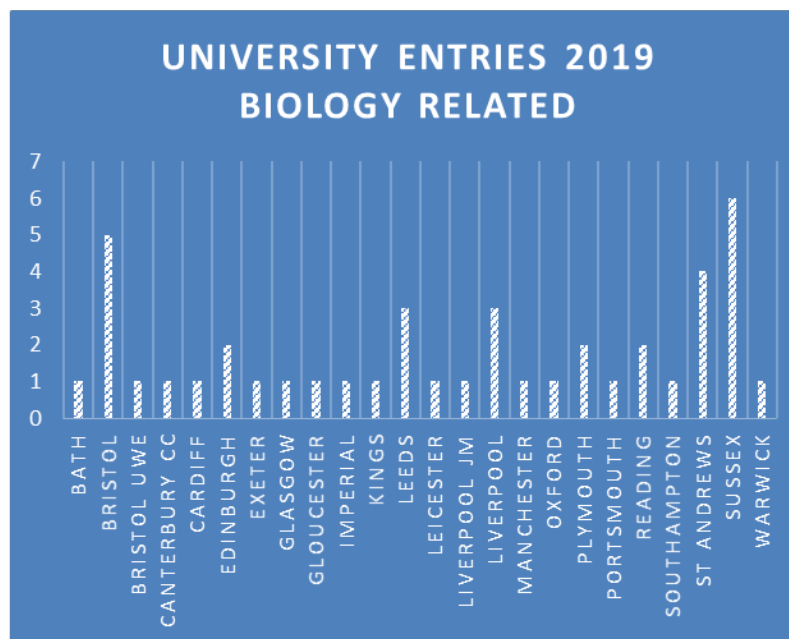
Biology

Higher Education at BHASVIC 2019

In Sept 2019, 43 BHASVIC students went onto study Biology related degrees at 24 different universities

Our science students can choose a combined science degree (e.g. natural science)

* Also see our Medicine & Engineering HE info posters



Should I study Biology at degree level?

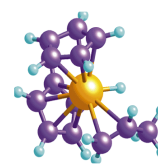
Biology is a well respected degree choice, containing a wide variety of modules, ensuring you can study something that really interests you and making it a good choice for keen scientists

You will have about 20 hours of teaching each week, mainly lectures, but also tutorials and laboratory experiments. Contact time is higher studying science degrees due to lab work.



Types of Biology degree

- You can choose to study straight biology or a closely related subject, for example
- human biology
- marine biology
- molecular biology
- cell biology
- life sciences
- anatomy
- Physiology
- microbiology



Entry Requirements

- Many universities will ask for A level biology or equivalent
- Many will also ask for an A level chemistry or maths
- If you want to do a degree such as biochemistry or biological sciences, the qualifications you are required to have will differ

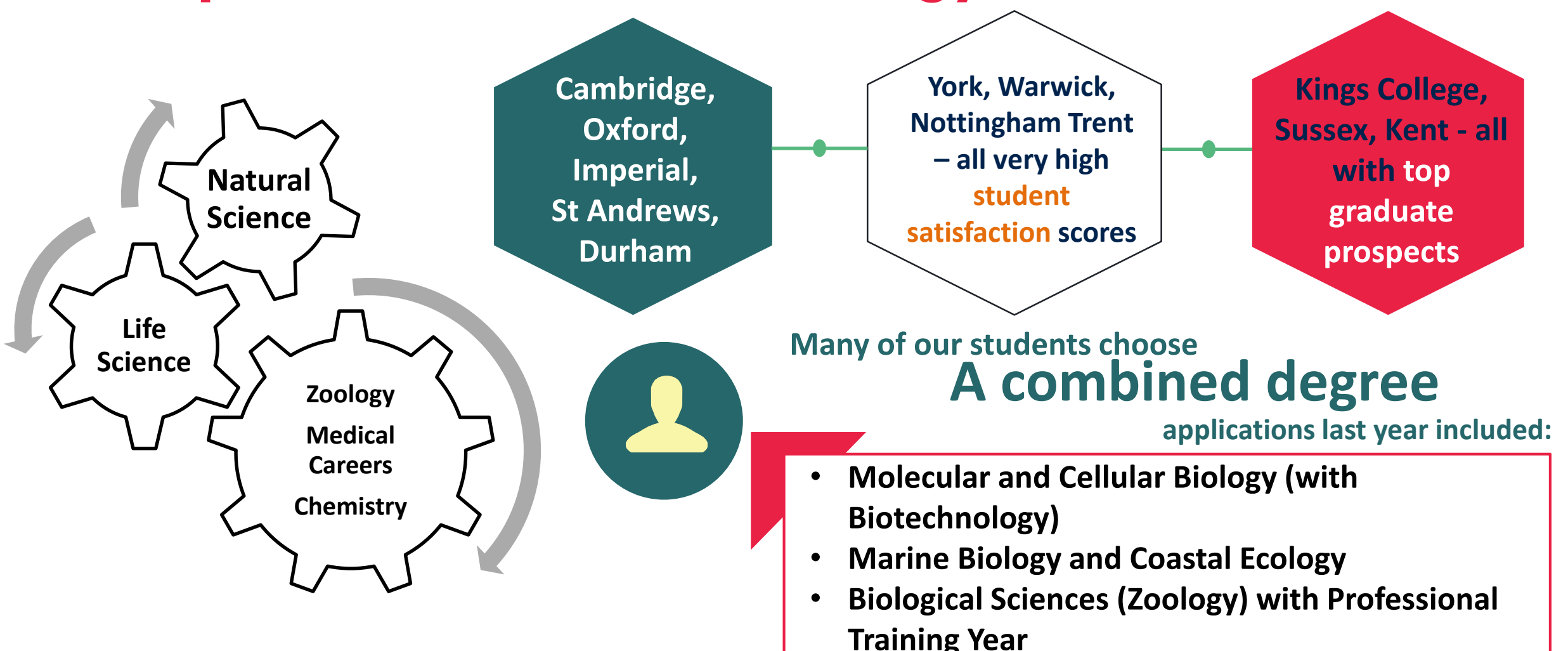


Biology degree modules

- First year topics often include:
- cell biology
- ecology and evolution
- molecular genetics
- physiology
- basic biochemistry
- microbiology

Top 10 Universities for Biology

Complete University Guide 2020



Imperial
A*AA

A level grades
or BTEC
equivalents

Brighton
BCC

UEA
BBB

Liverpool
(with
Foundation Year)
CCC

.....or higher
apprenticeship

Laboratory
Technician
Glaxo Smithcline

Why not try a foundation degree..